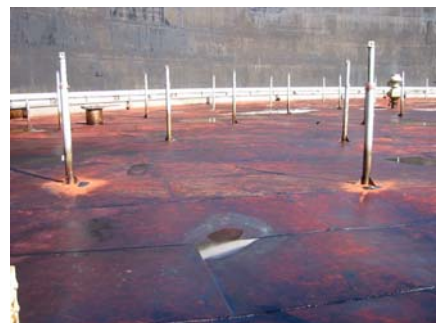




Worldwide repairs carried out with PolymerMetal®

REP-#148



Several holes and damaged spots respectively in the roof of a big tank at an oil refinery were first grinded and cleaned to prepare the surface and then coated with Ceramium. Then the Ceramium was grinded to rough up the surface. Finally a layer of MM-Elastomer was applied to compensate any bigger tensions.

MultiMetal
the MetalExistenceCompany®